

TREATMENT YOU CAN TRUST

Guide to SNMMI Radiopharmaceutical Therapy Centers of Excellence



The number of institutions SNMMI has designated as Radiopharmaceutical Therapy Centers of Excellence (RPTCOEs) across the U.S., its territories, and Canada.

What Is an RPTCOE?

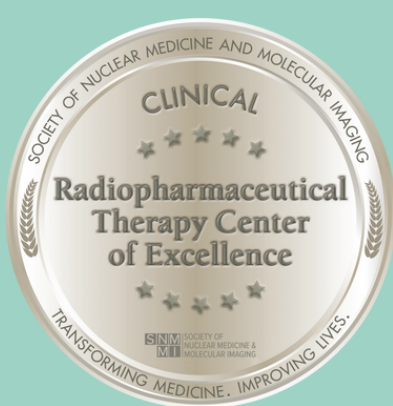
An SNMMI Radiopharmaceutical Therapy Center of Excellence is a site that has affirmed they meet strict regulatory, training, qualification, experience and performance criteria. All centers' applications have been vetted by SNMMI's group of experts in radiopharmaceutical therapy.

Look for Our Seal of Approval



Comprehensive RPTCOE

Administers multiple radiopharmaceutical therapies; has established care teams for specific disease areas; actively participates in radiopharmaceutical therapy research.



Clinical RPTCOE

Administers multiple radiopharmaceutical therapies and has an established care team in specific disease areas.



Registered RPTCOE

Administers at least one radiopharmaceutical therapy.

Recognizing RPTCOEs:



Encourages standardization of infrastructure and administration



Ensures harmonization of clinical trials to advance research



Lays the groundwork for other institutions in other countries to open successful radiopharmaceutical therapy centers.